

# Master™ Pattern Letters and Figures



Pattern Shop/Foundry Supplies

## Twenty – four Type Faces in Aluminum, Brass, or White Metal

The Kindt-Collins Company has manufactured pattern letters and figures since 1924. All are made to produce clean, high-quality castings that can be easily read. Their quality is unsurpassed.

MASTER Pattern Letters and Figures draw evenly from sand or from vacuum forming molds and other molding materials. The castings or moldings come out clean and sharp.

In pattern shops and foundries our letters and figures are used for identifying the manufacturer, and for serial numbers, part numbers, batch numbers, private brands, and dates. Because of their high quality, MASTER Pattern Letters and Figures are also used for many other purposes including:

- Advertising purposes
- Desk plates
- Door markers
- Grave markers
- Identifications markers
- Memorial plaques
- Signs of all kinds
- Tablets

MASTER Pattern Letters and Figures are available in 24 styles of type faces and in sizes from 3/32" to 6". They are made of aluminum, white metal, or brass.

Styles, sizes, descriptions, and applications are shown on the following pages.

## How To Order Pattern Letters and Figures

**Quantity** – Give the exact number of letters and/or figures for each size. If commas, periods, dashes, or ampersands are required, be sure to indicate these as separate items.

**Fonts** – When large quantities of letters and/or figures are required, it is more convenient to purchase Font Assortments. See Page 72 for the three most commonly ordered Font Assortments.

**Size** – Indicate the height of the letters and/or figures. See the charts on the following pages as to how the various styles are measured. Most letters are measured center to center on the face or overall on the face. Deep Block Gothic is measured overall on the back.

**Style** – Select and indicate the style of type face required from the illustrations on the following pages.

**Metal** – Specify whether letters and/or figures are to be aluminum, white metal, or brass.

**Sprigs** – Available in aluminum only in most sizes of Sharp Face Gothic and Sharp Face Gothic Reverse style and in four sizes of Hairline style.

**Drilled** – Letters and/or figures can be drilled for attaching with brads. (Smallest size that can be drilled is 1/4"). If drilling is not indicated, undrilled letters will be supplied.

If you are ordering and are not certain of the style you need, please submit a sample. This will ensure positive identification.

## Master™ Universal Adhesive and Solvent

### For Attaching MASTER Pattern Letters

This quick-acting, waterproof adhesive has a high viscosity that speeds the work of applying MASTER Pattern Letters. Properly applied, it forms an instant and fixed bond between the letter and pattern surface. It is not affected by moisture, lacquers, shellacs or quality pattern coatings. MASTER Universal Adhesive also works well as a cement for leather fillets.

Size	Description	Catalog Number
1 Quart	Universal Adhesive	920-UA1Q
1 Quart	Universal Adhesive Solvent	921-UAS1Q

MASTER Universal Adhesive Solvent is used for thinning and removing excess adhesive.





# Master™ Pattern Letters and Figures

## Type Style Selection Chart

Our Pattern Letter Department has the most complete stock of metal pattern letters and figures in a wide range of styles and sizes of any company in the world. The pictures below illustrate 24 available type face styles. For more in-depth information, please refer to page number listed with each style.

<b>SHARP FACE GOTHIC</b>  PAGE 67		<b>CLASSIC TABLET CAPITALS</b>  PAGE 68	
<b>SHARP FACE GOTHIC REVERSE</b>  PAGE 67		<b>CLASSIC TABLET LOWER CASE</b>  PAGE 68	
<b>SHARP FACE GOTHIC WITH SPRIGS</b>  PAGE 67		<b>CLASSIC TABLET CONDENSED</b>  PAGE 68	
<b>SHARP FACE GOTHIC REVERSE WITH SPRIGS</b>  PAGE 67		<b>ROUND FACE GOTHIC</b>  PAGE 70	
<b>FLAT FACE GOTHIC NO. 1</b>  PAGE 69		<b>ROMAN REGULAR</b>  PAGE 70	
<b>FLAT FACE GOTHIC NO. 2</b>  PAGE 69		<b>ROMAN THIN</b>  PAGE 70	
<b>RUNIC TABLET NO. 7 CAPITALS</b>  PAGE 69		<b>HAIR LINE GOTHIC REGULAR</b>  PAGE 71	
<b>RUNIC TABLET NO. 7 LOWER CASE</b>  PAGE 69		<b>HAIR LINE GOTHIC HEAVY</b>  PAGE 71	
<b>DEEP BLOCK GOTHIC REGULAR</b>  PAGE 68		<b>HAIR LINE GOTHIC WITH SPRIGS</b>  PAGE 71	
<b>DEEP BLOCK GOTHIC CONDENSED</b>  PAGE 68		<b>CAR WHEEL GOTHIC</b>  PAGE 72	
<b>DEEP BLOCK GOTHIC EXTENDED</b>  PAGE 68		<b>PLATE LETTERS &amp; FIGURES</b>  PAGE 71	
<b>DORIC HALF ROUND</b>  PAGE 70		<b>BRANDING LETTERS</b>  PAGE 71	

# Master™ Pattern Letters and Figures



## Sharp Face Gothic

Pattern Shop/Foundry Supplies



Available Metals: Aluminum, Brass, and White Metal. Sprigs available in aluminum only

Available Characters: A B C D E F G H I J K L M  
N O P Q R S T U V W X Y Z  
& 1 2 3 4 5 6 7 8 9 0 - .  
(These characters not available in 10A font. Periods not available in 1/8" and 3/16" sizes. No commas available in reverse sprigs in any size.)

## Available Sizes and Dimensions (Inches)

Size	Sharp Face Gothic		Sharp Face Gothic with Sprigs		Sharp Face Gothic Reverse		Sharp Face Gothic Reverse with Sprigs		Size
	Width of 10 Letters	Thickness	Width of 10 Letters	Thickness	Width of 10 Letters	Thickness	Width of 10 Letters	Thickness	
1/8	1-3/4	1/32	1-3/4	1/32	1-11/16	1/32	—	—	1/8
3/16	2-1/4	3/64	2-1/4	3/64	2-1/4	3/64	—	—	3/16
1/4	2-3/4	3/64	2-3/4	3/64	2-3/4	1/16	2-3/4	3/64	1/4
5/16	3-3/8	1/16	3-3/8	1/16	3-3/8	1/16	—	—	5/16
3/8	3-7/8	5/64	3-7/8	5/64	3-7/8	5/64	3-7/8	5/64	3/8
1/2	4-3/4	3/32	4-3/4	3/32	4-3/4	3/32	4-3/4	3/32	1/2
5/8	5-3/4	7/64	5-3/4	7/64	5-3/4	1/8	5-3/4	7/64	5/8
3/4	6-5/8	1/8	6-5/8	1/8	6-5/8	1/8	6-5/8	1/8	3/4
7/8	7-1/2	9/64	7-1/2	9/64	—	—	—	—	7/8
1	8-1/4	11/64	8-1/4	11/64	8-1/4	11/64	8-1/4	11/64	1
1-1/4	9-7/8	3/16	9-7/8	3/16	9-7/8	3/16	9-7/8	3/16	1-1/4
1-1/2	11-7/8	7/32	11-7/8	7/32	11-7/8	7/32	11-7/8	7/32	1-1/2
1-3/4	14-5/8	15/64	14-5/8	15/64	14-5/8	15/64	—	—	1-3/4
2	16-3/8	1/4	16-3/8	1/4	16-3/8	17/64	—	—	2
2-1/4	19-5/8	9/32	—	—	—	—	—	—	2-1/4
2-1/2	20	5/16	20	5/16	20	21/64	—	—	2-1/2
3	23-7/8	3/8	23-7/8	3/8	23-7/8	3/8	23-7/8	3/8	3
4	29-3/4	15/32	29-3/4	15/32	—	—	—	—	4
6	45-1/4	15/32	—	—	—	—	—	—	6

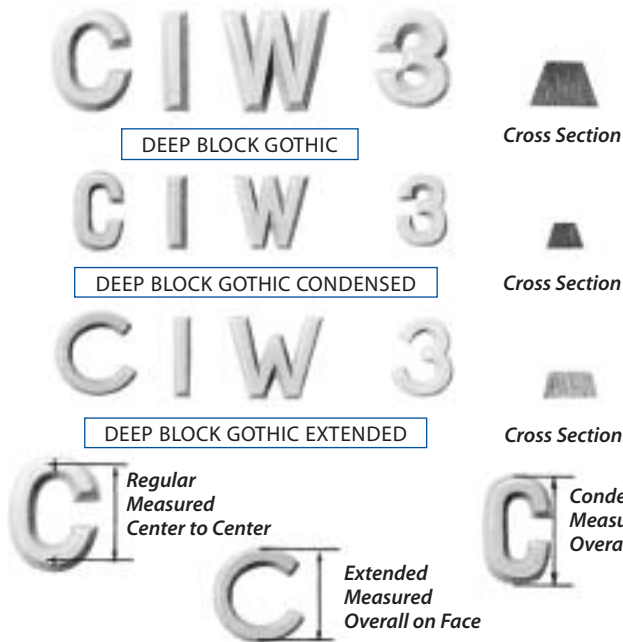
To Order Specify Individually: (1) Number of Pieces Needed  
(2) Size (not width or thickness)  
(3) Style  
(4) Metal



# Master™ Pattern Letters and Figures

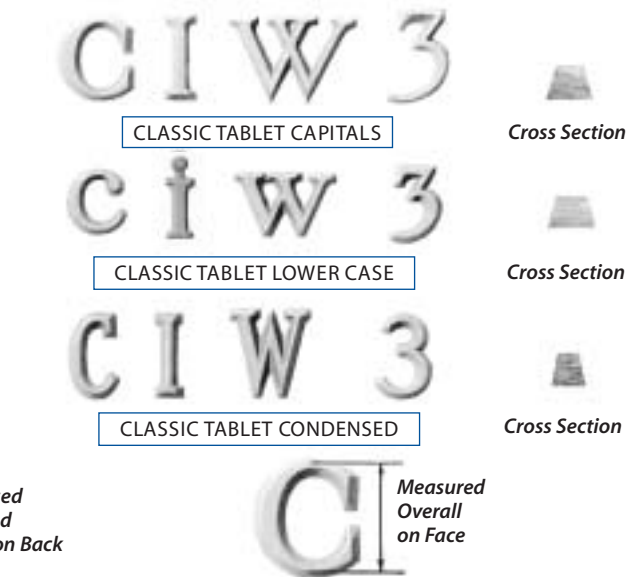
Pattern Shop/Foundry Supplies

## Deep Block Gothic



Available Metals: Aluminum, Brass, White Metal  
 Available Characters: A B C D E F G H I J K L M  
 N O P Q R S T U V W X Y Z  
 & 1 2 3 4 5 6 7 8 9 0 - . ,

## Classic Tablet



Available Metals: Aluminum, Brass, White Metal  
 Available Characters: A B C D E F G H I J K L M  
 N O P Q R S T U V W X Y Z  
 & 1 2 3 4 5 6 7 8 9 0 - . ,  
 (These characters not available in 10A font. Numbers are not available in Lower Case)

### Available Sizes and Dimensions (Inches)

Size	Deep Block Gothic Regular		Deep Block Gothic Condensed		Deep Block Gothic Extended	
	Width of 10 Letters	Thickness	Width of 10 Letters	Thickness	Width of 10 Letters	Thickness
1/4	3-1/4	7/64	2-3/8	3/32	2-7/8	3/32
5/16	—	—	—	—	3-3/8	3/32
3/8	4-1/8	7/64	2-7/8	3/32	3-3/4	3/32
1/2	5-3/8	1/8	3-1/2	3/32	4-3/4	7/64
5/8	6-1/4	9/64	4-1/8	3/32	5-3/4	7/64
3/4	7-1/8	5/32	4-3/4	3/32	6-7/8	7/64
7/8	8	11/64	5-7/8	5/64	8-3/8	7/64
1	8-3/4	11/64	5-7/8	3/32	8-7/8	7/64
1-1/4	10-1/8	3/16	6-5/8	7/64	10-7/8	7/64
1-1/2	11-7/8	7/32	8-5/8	1/8	12-7/8	7/64
1-3/4	—	—	9-5/8	5/32	—	—
2	15-1/8	1/4	11-1/4	11/64	16-7/8	7/64
2-1/4	17-7/8	9/32	—	—	—	—
2-1/2	18-3/8	19/64	13-7/8	5/32	—	—
3	21-1/2	5/16	16-1/8	3/16	25-1/4	17/64
4	29-7/8	23/64	20-3/8	7/32	—	—

To Order Specify Individually:  
 (1) Number of Pieces Needed  
 (2) Size (not width or thickness)  
 (3) Style of Type Face  
 (4) Metal

### Available Sizes and Dimensions (Inches)

Size	Classic Tablet Capitals		Classic Tablet Lower Case*		Classic Tablet Condensed	
	Width of 10 Letters	Thickness	Width of 10 Letters	Thickness	Width of 10 Letters	Thickness
5/32	—	—	2	1/32	—	—
1/4	3-1/4	7/64	3-1/8	1/8	3	3/32
5/16	3-7/8	7/64	—	—	—	—
3/8	4-1/4	1/8	3-3/8	1/8	3-3/8	1/8
1/2	5	1/8	—	—	3-3/4	1/8
5/8	5-7/8	1/8	6-1/4	1/8	4-3/8	1/8
3/4	6	1/8	—	—	4-1/2	1/8
7/8	8-1/4	1/8	—	—	—	—
1	8-7/8	1/8	—	—	5-1/4	1/8
1-1/4	10-1/8	1/8	—	—	7	1/8
1-1/2	12-7/8	1/8	—	—	8-1/8	1/8
1-3/4	14-3/8	1/8	—	—	9-1/2	1/8
2	16-5/8	1/8	—	—	10-3/4	1/8
2-1/2	20	1/8	—	—	—	—
3	23-3/8	1/8	—	—	15-7/8	1/8

\* Use 5/32" Lower Case Letters with 1/4" Capitals  
 Use 1/4" Lower Case Letters with 1/2" Capitals  
 Use 3/8" Lower Case Letters with 5/8" Capitals  
 Use 5/8" Lower Case Letters with 1" Capitals

Numbers and ampersand (&) not available in lower case.

# Master™ Pattern Letters and Figures



## Flat Face Gothic



Available Metals: Aluminum, Brass, White Metal  
 Available Characters: A B C D E F G H I J K L M  
 N O P Q R S T U V W X Y Z  
 & 1 2 3 4 5 6 7 8 9 0 - . ,  
 (These characters not available in 10A font. Period and comma not available in 1/8" and 3/16")

## Runic Tablet No. 7



Available Metals: Aluminum, Brass, White Metal  
 Available Characters: A B C D E F G H I J K L M  
 N O P Q R S T U V W X Y Z  
 & 1 2 3 4 5 6 7 8 9 0 - . ,  
 (These characters not available in 10A font. Period and comma not available in 1/8" and 3/16")

### Available Sizes and Dimensions (Inches)

Size	Flat Face Gothic No. 1		Flat Face Gothic No. 2	
	Width of 10 Letters	Thickness	Width of 10 Letters	Thickness
1/8	1-5/8	1/32	—	—
3/16	2	1/32	2	1/32
1/4	2-5/8	1/32	2-3/8	3/64
5/16	3-1/4	3/64	3-1/4	1/16
3/8	3-3/4	3/64	3-3/4	5/64
1/2	4-7/8	1/16	4-5/8	3/32
5/8	5-1/2	1/16	5-3/4	7/64
3/4	6-1/2	1/16	6-1/2	1/8
7/8	7-1/4	5/64	7-3/4	9/64
1	8-1/8	5/64	8-1/4	11/64
1-1/4	9-5/8	3/32	9-3/4	9/32
1-1/2	11-3/4	7/64	11-3/4	5/32
1-3/4	14-1/2	1/8	14-1/2	5/32
2	16-3/8	1/8	16-1/2	3/16
2-1/4	19-5/8	.145	18-1/4	3/16
2-1/2	20	.145	19-7/8	7/32
3	23-7/8	.145	25-5/8	7/32
4	—	—	29-7/8	9/32

To Order Specify Individually:  
 (1) Number of Pieces Needed  
 (2) Size (not width or thickness)  
 (3) Style of Type Face  
 (4) Metal

### Available Sizes and Dimensions (Inches)

Size	Runic Tablet No. 7 Capitals		Runic Tablet No. 7 Lower Case*	
	Width of 10 Letters	Thickness	Width of 10 Letters	Thickness
1/4	3-1/4	3/32	3-5/8	3/64**
3/8	4	3/32	4	5/64**
1/2	4-7/8	3/32	5-1/8	3/32**
5/8	5-7/8	3/32	6	3/32**
3/4	6-3/8	3/32	—	—
7/8	7-3/8	3/32	—	—
1	8-1/2	3/32	—	—
1-1/4	10-1/8	3/32	—	—
1-1/2	11-3/4	1/8	—	—
1-3/4	14-3/4	1/8	—	—
2	16-3/8	1/8	—	—
2-1/4	17-5/8	1/8	—	—
2-1/2	18-5/8	1/8	—	—
2-3/4	19-3/4	1/8	—	—
3	21	5/32	—	—
4	25-7/8	3/16	—	—

\*Use 1/4" Lower Case Letters with 1/2" Capitals  
 Use 3/8" Lower Case Letters with 5/8" Capitals  
 Use 1/2" Lower Case Letters with 3/4" Capitals  
 Use 5/8" Lower Case Letters with 1" Capitals

\*\* Numbers are not available in lower case



# Master™ Pattern Letters and Figures

## Doric Half Round



Available Metals: Aluminum, Brass, White Metal  
 Available Characters: A B C D E F G H I J K L M  
 N O P Q R S T U V W X Y Z  
 & 1 2 3 4 5 6 7 8 9 0 - . ,

### Available Sizes and Dimensions (Inches)

Size	Width of 10 Letters	Thickness	Size	Width of 10 Letters	Thickness
1/4	2-1/2	3/64	7/8	8-1/4	7/64
5/16	3-1/8	1/16	1	9-1/4	1/8
3/8	3-3/4	5/64	1-1/4	11-1/4	9/64
1/2	5	5/64	1-1/2	12-5/8	11/64
5/8	6	3/32	1-3/4	14-7/8	11/64
3/4	6-5/8	3/32	2	17-1/8	13/64

## Round Face Gothic

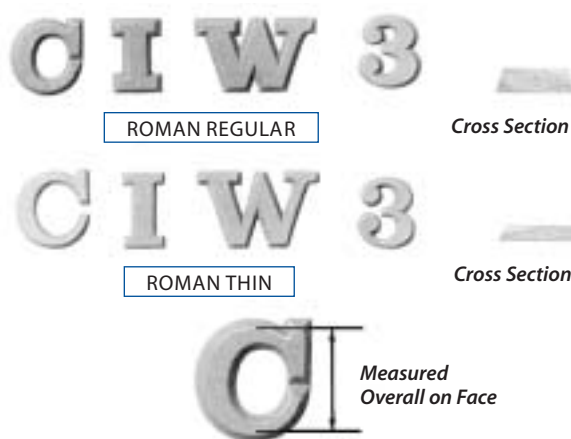


Available Metals: Aluminum, Brass, White Metal  
 Available Characters: A B C D E F G H I J K L M  
 N O P Q R S T U V W X Y Z  
 & 1 2 3 4 5 6 7 8 9 0 - . ,  
 (These characters not available in 10A font.  
 Period and comma not available in 3/16")

### Available Sizes and Dimensions (Inches)

Size	Width of 10 Letters	Thickness	Size	Width of 10 Letters	Thickness
3/16	2	3/64	1	8-1/2	11/64
1/4	3-1/4	5/64	1-1/4	10-5/8	13/64
3/8	3-7/8	3/32	1-1/2	13-1/2	15/64
7/16	4-3/8	3/32	1-3/4	15-1/4	9/32
1/2	5	7/64	2	16-1/2	19/64
5/8	5-7/8	1/8	2-1/2	20-5/8	11/32
3/4	6-1/2	9/64	3	24-1/2	3/8

## Roman



Available Metals: Aluminum, Brass, White Metal  
 Available Characters: A B C D E F G H I J K L M  
 N O P Q R S T U V W X Y Z  
 & 1 2 3 4 5 6 7 8 9 0 - . ,  
 (These characters not available in 10A font. Period and comma not available in 1/8" or 3/16")

### Available Sizes and Dimensions (Inches)

Size	Roman Regular		Roman Thin	
	Width of 10 Letters	Thickness	Width of 10 Letters	Thickness
1/8	2-1/8	3/64	—	—
3/16	3	1/16	2-5/8	1/32
1/4	3-3/4	1/16	3-3/8	1/32
5/16	4-1/2	5/64	—	—
3/8	4-7/8	5/64	4-1/2	3/64
1/2	6-1/8	5/64	5-5/8	3/64
5/8	7-1/4	5/64	6-3/4	3/64
3/4	8-5/8	3/32	8	1/16
7/8	9-1/2	3/32	—	—
1	9-7/8	7/64	10-1/8	1/16
1-1/4	11-7/8	9/64	—	—
1-1/2	14-3/8	9/64	—	—
1-3/4	16-3/8	9/64	—	—
2	19-3/8	9/64	—	—
3	29-3/4	3/16	—	—

To Order Specify Individually:  
 (1) Number of Pieces Needed  
 (2) Size (not width or thickness)  
 (3) Style of Type Face  
 (4) Metal



# Master™ Pattern Letters and Figures

## Hair Line Gothic



REGULAR HAIR LINE GOTHIC

White Metal only



Cross Section



HEAVY HAIR LINE GOTHIC

Aluminum, Brass, White Metal



Cross Section



HAIR LINE GOTHIC SPRIGS

Aluminum only



Cross Section



Measured Center to Center on Point

Available Characters: A B C D E F G H I J K L M  
N O P Q R S T U V W X Y Z  
& 1 2 3 4 5 6 7 8 9 0 - . ,  
(These characters not available in 10A font. Period and common not available in 3/32", 1/8" or 3/16")

## Available Sizes and Dimensions (Inches)

Size	Hair Line Gothic Regular		Hair Line Gothic Heavy		Hair Line Gothic with Sprigs	
	Width of 10 Letters	Thickness	Width of 10 Letters	Thickness	Width of 10 Letters	Thickness
3/32	—	—	1-1/8	.031	—	—
1/8	1-3/8	.024	1-1/2	.037	—	—
3/16	1-7/8	.028	1-7/8	.040	1-7/8	.028
1/4	2-3/8	.034	2-3/8	.050	2-3/8	.034
5/16	2-3/4	.040	2-7/8	.053	2-3/4	.040
3/8	3-1/8	.047	3-3/8	.053	3-1/8	.047
1/2	4	.059	4-3/8	.068	—	—
5/8	5-1/8	.070	5-1/8	.085	—	—
3/4	5-7/8	.073	5-3/4	.095	—	—
7/8	—	—	6-3/8	.100	—	—
1	7-1/2	.101	7-1/4	.110	—	—
1-1/4	—	—	9-1/8	.130	—	—
1-1/2	—	—	10-1/2	.140	—	—

To Order Specify Individually:

- (1) Number of Pieces Needed
- (2) Size (not width or thickness)
- (3) Style of Type Face
- (4) Metal

## Plate Letters and Figures



Cross Section



Measured Center to Center

Available Metals: Aluminum, White Metal  
Available Characters: A B C D E F G H I J K L M  
N O P Q R S T U V W X Y Z  
& 1 2 3 4 5 6 7 8 9 0

## Available Sizes and Dimensions (Inches)

Size	Width of 10 Letters	Thickness
3/8	4-3/8	.129
1/2	5-3/8	.139
5/8	6-5/8	.156
3/4	7-5/8	.160
1	9-3/8	.204

## Branding Letters (Reversed)



Cross Section



Measured Center to Center

Available Metals: Aluminum, Brass, White Metal  
Available Characters: A B C D E F G H I J K L M  
N O P Q R S T U V W X Y Z  
& 1 2 3 4 5 6 7 8 9 0 - . ,

## Available Sizes and Dimensions (Inches)

Size	Width of 10 Letters	Thickness
1/4	3	3/16
3/8	4-5/8	1/4
1/2	5-1/4	17/64
5/8	5-7/8	19/64
3/4	6-7/8	5/16
1	7-3/4	5/16
1-1/4	8-7/8	11/32

Pattern Shop/Foundry Supplies



# Master™ Pattern Letters and Figures

## Car Wheel Gothic



Measured  
Center to Center

Available Metals: Aluminum, Brass, White Metal  
 Available Characters: A B C D E F G H I J K L M  
 N O P Q R S T U V W X Y Z  
 & 1 2 3 4 5 6 7 8 9 0 - . ,

### Available Sizes and Dimensions (Inches)

Size	Width of 10 Letters	Thickness
1/2	5-3/8	5/32
5/8	7-1/4	3/16
3/4	8-1/8	3/16
1	9-3/8	13/32
1-1/4	10-5/8	7/32

To Order Specify Individually:  
 (1) Number of Pieces Needed  
 (2) Size (not width or thickness)  
 (3) Style of Type Face  
 (4) Metal

## Three Fonts Most Commonly Ordered

Fonts are composed of certain letters and numerals which are used more often than others. Below are three fonts most often ordered from Kindt-Collins. Be sure to specify style, metal and size.

### 10-A FONT: (229 CHARACTERS)

- 10 ea. - A I N O R S T . ,
- 4 ea. - B J K V W Y 1 —
- 7 ea. - C L
- 6 ea. - D H M P U
- 12 ea. - E
- 5 ea. - F G 0
- 3 ea. - Q X Z 2 3 4 5 6 7 8 9 &

### 25-A FONT: (500 CHARACTERS)

- 25 ea. - A I N O R T
- 15 ea. - B F G J U V W Y
- 20 ea. - D C H M P
- 30 ea. - E L S
- 10 ea. - K Q X Z

### 100-A FONT: (2110 CHARACTERS)

- 100 ea. - A C H I O R S T M
- 80 ea. - B D F G J L N P W Y
- 120 ea. - E
- 70 ea. - K
- 40 ea. - Q
- 60 ea. - U V
- 30 ea. - X Z

## Arrows



Available Metals: Aluminum, Brass, White Metal  
*Sprigs not available in sizes 1/4" and 3/8"; and sizes 2-1/2" thru 4". Sprigs are available only in sizes 1/2" thru 2".*

### Available Sizes and Dimensions (Inches)

Size	Thickness	Size	Thickness	Size	Thickness
1/4	.063	7/8	.090	2	.116
3/8	.075	1	.090	2-1/2	.125
1/2	.090	1-1/4	.090	3	.150
5/8	.090	1-1/2	.105	3-1/2	.174
3/4	.090	1-3/4	.112	4	.190

## Stars



Available Metals: Aluminum, Brass, White Metal

### Available Sizes and Dimensions (Inches)

Size	Thickness	Size	Thickness	Size	Thickness
1/8	.063	1/2	.090	1-1/4	.116
1/4	.075	5/8	.090	1-1/2	.125
5/16	.090	3/4	.090	1-3/4	.150
3/8	.090	1	.105		

To Order Arrows and Stars Specify:  
 (1) Arrows or Stars  
 (2) Quantity  
 (3) Size (not thickness)  
 (4) Metal



# Master™ Monograms, Foundry Marks, Trademarks, and Special Letters, Steel Stamps

## Clear, Sharp Bold Relief Identifications

For many years we have made specially designed foundry marks, monograms, and trademarks used to identify patterns and manufacturer's castings. We also make special letters, alphabets, and figures designed for specific purposes.

Our craftsmen are trained to design custom work where unusual designs are desired. The fabrication of these symbols is carefully controlled so that reproduction is sharp and distinct. Each unit is carefully inspected by our quality control experts to ensure that all definitions are clean and stand out in bold relief.

The UL, UL®, and ® trademarks are frequently requested by our customers. Below are tables listing various sizes of these trademarks that we maintain in stock.

Send us your artwork or sketch of your design. We will be glad to quote on your requirements in aluminum, white metal, or brass.



### Hand Cut Steel Stamps Letters and Figures



These steel stamps in gothic style are precision machined from special high grade tool steel and expertly tempered to ensure sharp, legible marks in all kinds of wood or metal. They are practically indestructible.

Stamps are available in other sizes to order and in heavy duty style, reverse style, and in specially designed letters and trademarks. Letter and figure stamps are also available individually as well as in sets.

### UL Trademark

Circle Diameter (Inches)	Letter Height (Inches)	Catalog Number		
		Aluminum	Brass	White Metal
1/4	1/8	336-UA04	336-UB04	336-UW04
3/8	3/16	336-UA06	336-UB06	336-UW06
1/2	1/4	336-UA08	336-UB08	336-UW08
5/8	5/16	336-UA10	336-UB10	336-UW10
3/4	3/8	336-UA12	336-UB12	336-UW12

### UL® Trademark

Circle Diameter (Inches)		Letter Height (Inches)		Catalog Number		
				Aluminum	Brass	White Metal
Outer	Inner	"UL"	"R"			
1	1/8	7/16	1/16	336-TA16	336-TB16	336-TW16
2	1/4	15/16	1/8	336-TA32	336-TB32	336-TW32
3	1/4	1-7/16	1/8	336-TA48	336-TB48	336-TW48

### ® Trademark

Circle Diameter (Inches)	Letter Height (Inches)	Catalog Number		
		Aluminum	Brass	White Metal
1/8	1/16	336-RA02	336-RB02	336-RW02
1/4	1/8	336-RA04	336-RB04	336-RW04
3/8	3/16	336-RA06	336-RB06	336-RW06
1/2	1/4	336-RA08	336-RB08	336-RW08
3/4	3/8	336-RA12	336-RB12	336-RW12
1	5/8	336-RA16	336-RB16	336-RW16

Character Size (Inches)	Catalog Number	
	27 Piece Letter Set	10 Piece Figure Set
1/16	990-S0502L	990-S0502F
3/32	990-S0503L	990-S0503F
1/8	990-S0504L	990-S0504F
5/32	990-S0505L	990-S0505F
3/16	990-S0506L	990-S0506F
1/4	990-S0508L	990-S0508F
5/16	990-S0510L	990-S0510F
3/8	990-S0512L	990-S0512F
1/2	990-S0516L	990-S0516F

To Order Trademarks and Steel Stamps Specify:  
(1) Quantity  
(2) Catalog Number

Pattern Shop/Foundry Supplies